

RESIDENZA
Ascona

—
Appartamento **A11**

Edificio **A**

PIANO 4

PIANO 3

PIANO 2

PIANO 1

PT



Piano 1
Locali 2
Superficie m² 49

Annotazioni

.....

.....

.....

.....

.....

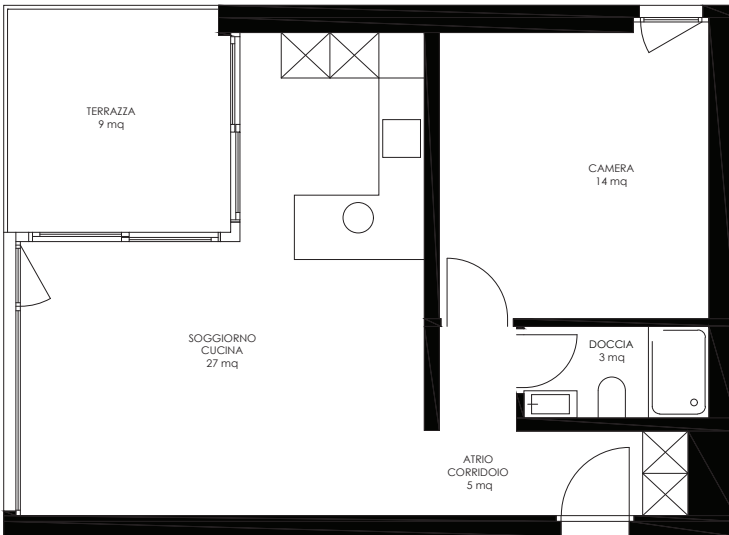
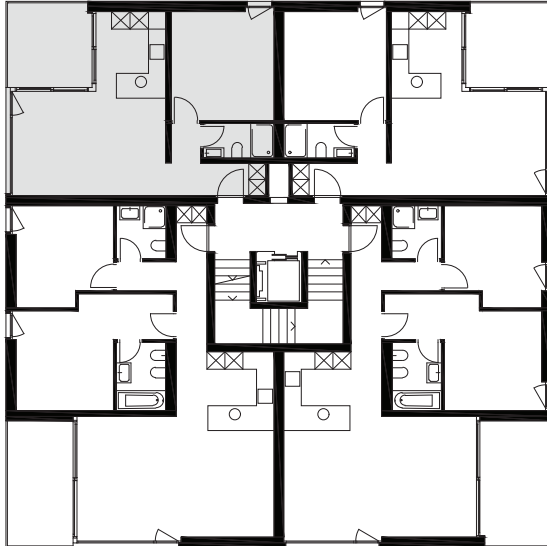
.....

.....

.....

.....

.....



SCALA 1:100



Livit SA
Via Greina 2
6900 Lugano
www.livit.ch

Persona di contatto:
Ana Jakimova
ana.jakimova@livit.ch
058 360 34 09