

RESIDENZA  
**Ascona**

—  
Appartamento **A21**

Edificio **A**

PIANO 4

PIANO 3

PIANO 2

PIANO 1

PT



Piano 2  
Locali 2  
Superficie m<sup>2</sup> 49

Annotazioni

.....

.....

.....

.....

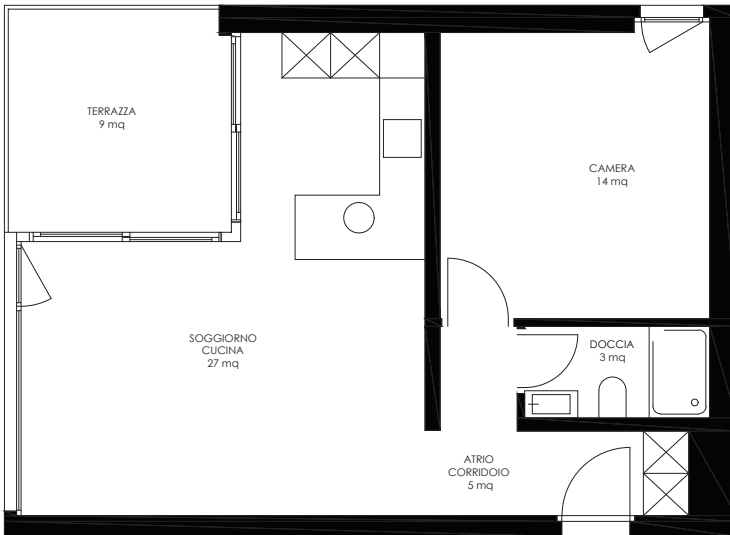
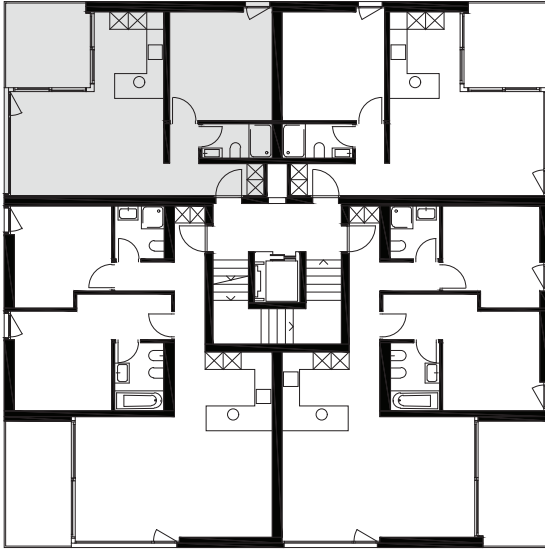
.....

.....

.....

.....

.....



SCALA 1:100

**Livit**  
Real Estate Management

**Livit SA**  
Via Greina 2  
6900 Lugano  
www.livit.ch

**Persona di contatto:**  
Ana Jakimova  
ana.jakimova@livit.ch  
058 360 34 09