

RESIDENZA
Ascona

—
Appartamento **B41**

Edificio **B**

PIANO 4

PIANO 3

PIANO 2

PIANO 1

PT



Piano	4
Locali	2
Superficie	m ² 49

Annotazioni

.....

.....

.....

.....

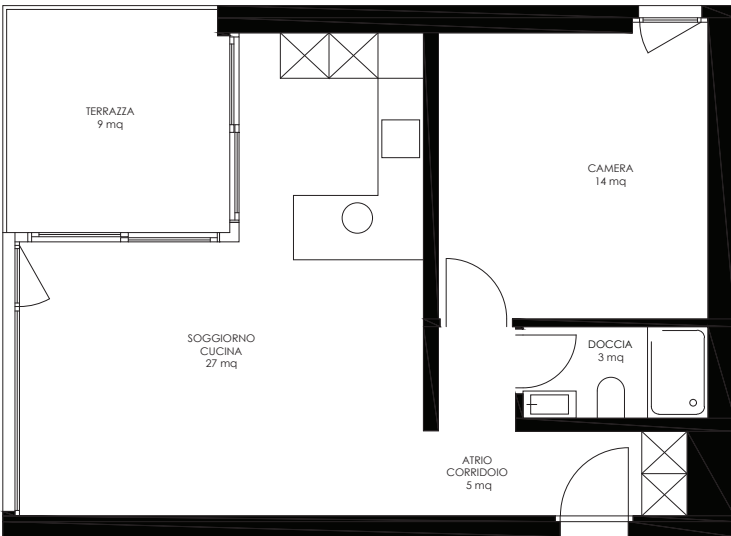
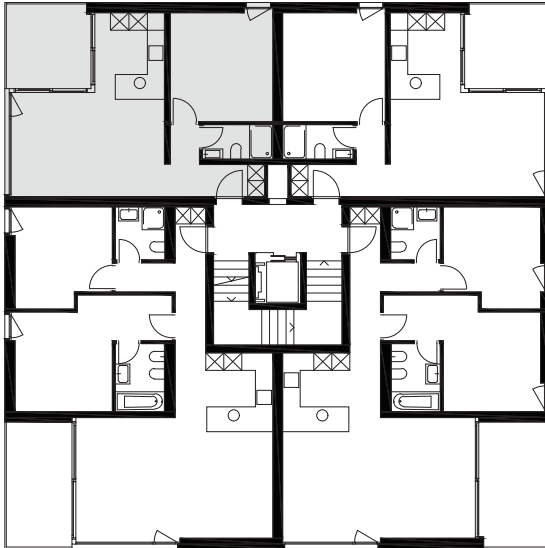
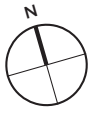
.....

.....

.....

.....

.....



SCALA 1:100

Livit
Real Estate Management

Livit SA
Via Greina 2
6900 Lugano
www.livit.ch

Persona di contatto:
Ana Jakimova
ana.jakimova@livit.ch
058 360 34 09