

RESIDENZA
Ascona

Appartamento **B43**

Edificio **B**

PIANO 4

PIANO 3

PIANO 2

PIANO 1

PT



Piano 4
Locali 3
Superficie m² 80

Annotazioni

.....

.....

.....

.....

.....

.....

.....

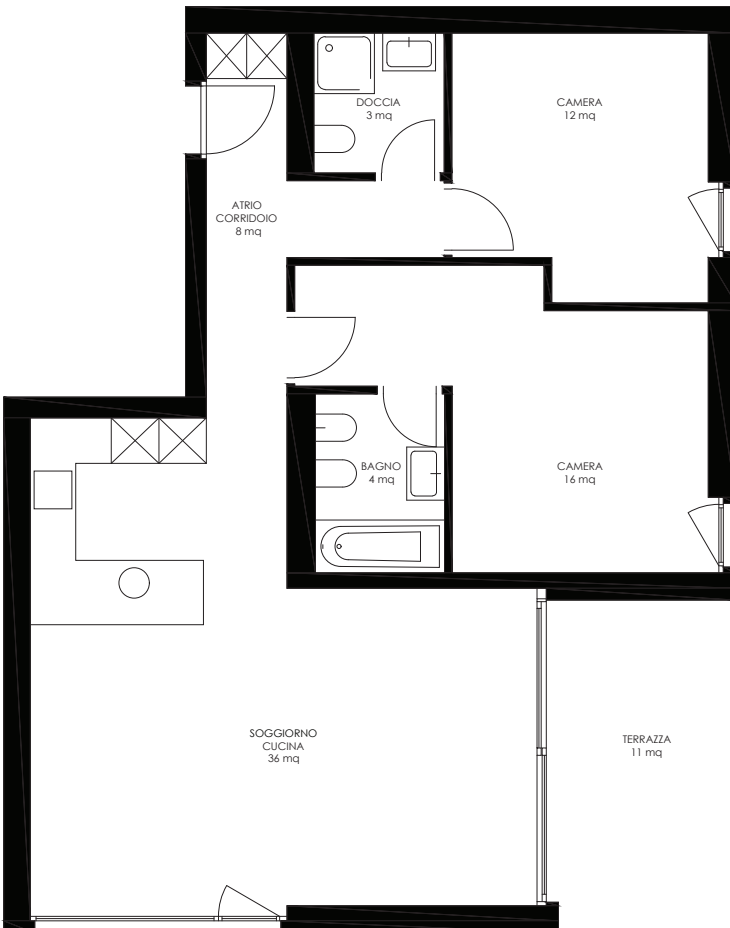
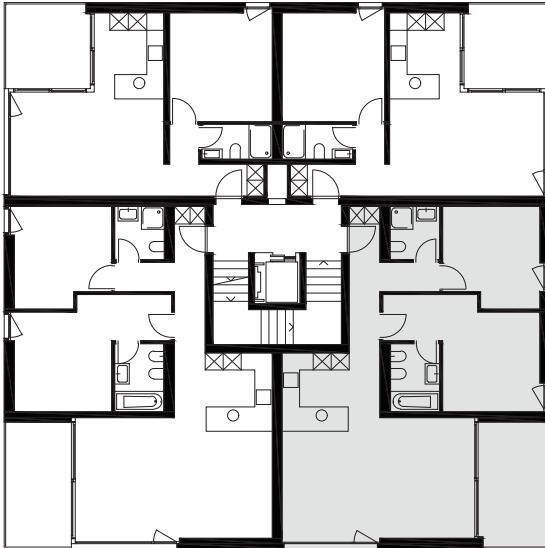
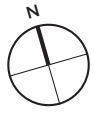
.....

.....

livit
Real Estate Management

Livit SA
Via Greina 2
6900 Lugano
www.livit.ch

Persona di contatto:
Ana Jakimova
ana.jakimova@livit.ch
058 360 34 09



SCALA 1:100